

CREATIVE®  
**SXFI**  
**GAMER**

*Super*®  
**X-Fi**

USB-C Gaming Headset with **Super X-Fi® Technology** and **CommanderMic**



EXPERIENCE GUIDE

## INTRODUCTION

Experience the magical audio reality of Super X-Fi with **Creative SXFI GAMER**.

SXFI GAMER is engineered with one main goal in mind—to be the perfect companion for all gamers who yearn for more. Equipped with Super X-Fi technology and CommanderMic, experience unparalleled gaming moments with this game changer.

The gaming headset is powered by a custom-designed Kevlar USB-C cable as well as our brand new BATTLE Mode feature, which is exclusive to SXFI GAMER at present. Get lost in the fantasy reality of virtual gaming worlds as you lead your teammates to victory or slay the largest beast ever known to mankind without missing a single beat. Experience an unbelievable level of realism in your headphones when gaming on PC, Mac, and consoles that sounds as good as the real thing!



“...really blown away at the positional sounds that I heard while playing CSGO”

— Overclock.net

**GAMES** that sound like you're on an **ACTIVE BATTLEFIELD**  
**MOVIES** that sound like you're in an **ACTUAL CINEMA**  
**MUSIC** that sounds like you're at a **LIVE CONCERT**



## HOLOGRAPHIC AUDIO—UNIQUE TO YOU, PERSONALIZED FOR YOU

Super X-Fi captures the listening experience of a high-end multi-speaker system in a professional studio and recreates the same expansive experience in your headphones using computational audio to custom fit sound for every individual, through a sophisticated Head and Ear-Mapping process.

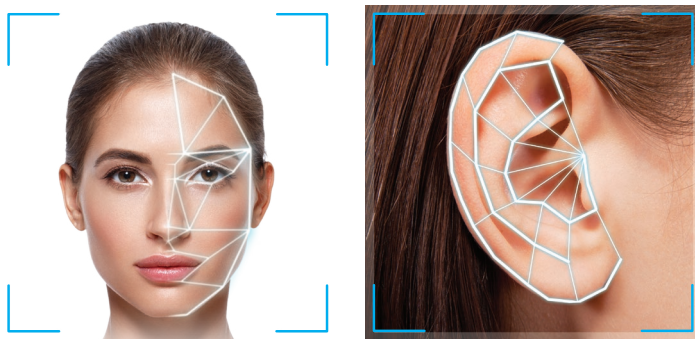
Each of us hears the world differently—our unique head and ear shapes affect how we perceive sound. Super X-Fi uses computational audio to personalize the headphone experience based on how you hear sound to give you the most optimized and realistic listening experience.



### HOW IT WORKS

Super X-Fi Headphone Holography uses complex algorithms and computationally intensive techniques to custom fit audio, for every individual, through a sophisticated Head and Ear-Mapping process. This is done by simply taking several photos of your face and ears with your phone.

Hundreds of anthropometric parameters are extracted from the features of the head in high precision using real-time image detection and analysis. An artificial intelligence (AI) engine then uses these parameters along with the dynamics of the targeted headphones, and synthesizes them with a multidimensional map of the desired room acoustics.



*Advanced Head and Ear-Mapping extracts unique physical traits that determine how you perceive sound.*



## OVERVIEW

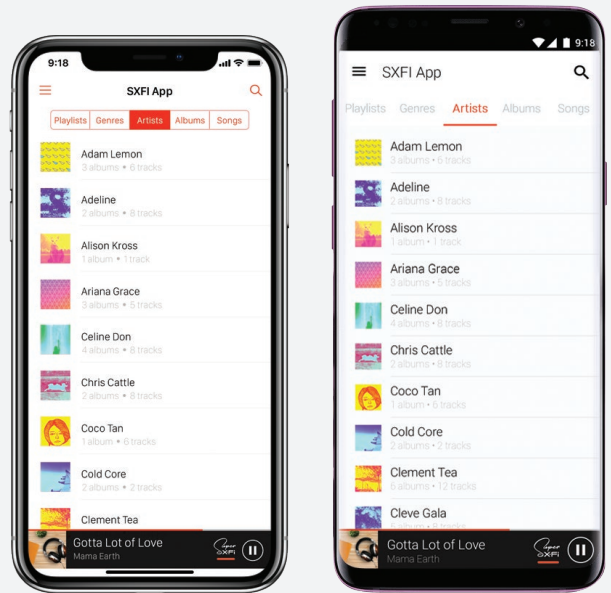
### ARCHITECTURE & CONTROLS



## OVERVIEW

### SXFI APP

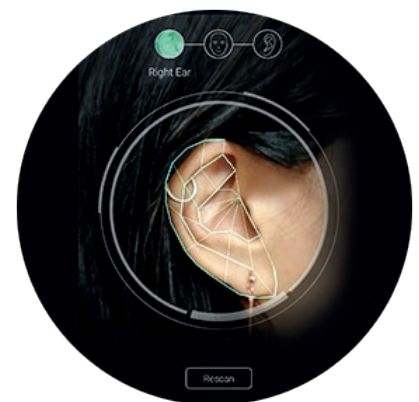
Available on the App Store and Google Play, the SXFI App is a FREE app that lets you personalize your Super X-Fi profile. This personalization needs to be done only once, across all your Super X-Fi devices.



## SETTING UP YOUR PERSONALIZED SUPER X-FI PROFILE

For all Super X-Fi products, you will need to set up a personalized Super X-Fi profile for a customized listening experience.

This personalization needs to be done only once, across all your Super X-Fi devices, in several simple steps.



### STEP 1: DOWNLOAD SXFI APP

Download SXFI App from the App Store or Google Play.

### STEP 2: REGISTER AN ACCOUNT

Register for a Super X-Fi account. This account can be used across all Super X-Fi devices.

Note that this account is **NOT** your Creative Store account. It is a separate registration.

### STEP 3: HEAD AND EAR-MAPPING

Go through a simple one-time capture of a few pictures—**right ear, face, and left ear**.

#### TIPS:

- Ask a friend to help capture the pictures!
- Also, be sure to hold your phone parallel to the ears when you capture the pictures (it should be held parallel to the ear as shown in the image above, not the head)

## CONFIGURING CREATIVE SXFI GAMER WITH YOUR SUPER X-FI PROFILE

Downloading your personalized profile into SXFI GAMER can be done effortlessly either through **SXFI App** on your mobile device or **SXFI Control**, available on PC and Mac.

Follow the steps below to complete the setup guide to enjoy the magic of Headphone Holography.



### 1 DOWNLOAD SXFI APP & REGISTER

Search for "**SXFI APP**" on the App Store or Google Play. Register for a new account using your email address.



### 2 PERSONALIZE SUPER X-FI PROFILE

For first-time users, follow the app's instructions to perform Head and Ear-Mapping by capturing the images of your ears and face. For best results, please hold the phone parallel to your outer ears. It's better to ask someone to help you.



### 3 DOWNLOAD SUPER X-FI PROFILE TO SXFI GAMER

1. Plug SXFI GAMER's cable into an available USB port on your mobile device, PC, or Mac
2. Launch SXFI App / SXFI Control and log into your registered Super X-Fi Account
3. Your profile will automatically be downloaded and saved in the gaming headset



### 4 USING SXFI GAMER FOR AUDIO PLAYBACK

Upon completing the steps above, simply connect SXFI GAMER into your choice of device to enjoy unparalleled gaming audio playback.



## SXFI GAMER: KEY FEATURES

### Super X-Fi Technology—Award-winning Audio Technology

Amassing a total of 23 “Best of CES” awards over 2 years (2019 and 2020), Super X-Fi Headphone Holography is our critically-acclaimed technology that is set to transform your audio experience. From the creators of Sound Blaster, Super X-Fi captures the listening experience of a high-end multi-speaker system in a professional studio and recreates the same expansive experience in your headphones.



Super X-Fi is designed with a complex inverse computation on the headphone audio signal to reverse the claustrophobic effect, bringing the source of the sound outside again—so that it sounds natural, just like in the real world. With a custom sound profile made via a sophisticated Head and Ear-Mapping process, experience a world of possibilities with headphones on, wherever you may be.



### Forget The Real World

Immerse yourself in games and forget the real world exists. With our expert-tuned 50 mm headphone drivers, it's possible! The high-performance drivers accompanied with Super X-Fi provide you with the perfect blend of cinematic effects and precise acoustic details. With SXFI GAMER, feel the chest-pounding impact of each explosion on the battlefield, and experience the deep visceral bass that gets your adrenaline rushing. Hear much more details with the expanded soundstage of Super X-Fi headphone holography!

Super X-Fi recreates 7.1 holographic audio like in real life, and can be as good as in an actual cinema. In fact, it's even better than the cinema, as Super X-Fi puts you in the audio sweet spot so you have the best seat in the house all the time. The holographic audio makes movies sound natural so you can enjoy for long hours without feeling fatigue.

## SXFI GAMER: KEY FEATURES

### **BATTLE Mode—Offense is the Best Defense**

BATTLE Mode is a brand-new SuperX-Fi audio mode that offers the best audio projection and directionality on headphones. Gain an extra edge in First-person Shooter (FPS) games on top of hyper-realistic audio from Super X-Fi and expect to hear audio cues with a new level of clarity and depth that pinpoints your enemies' locations as well as their distance from you to an unprecedented level of accuracy.

Bringing you the next level of surround sound in FPS gaming where every bullet and movement counts, BATTLE Mode is capable of delivering even the slightest acoustic detail that one may easily miss. Whether it's the faintest footsteps or a quick tactical gun reload, you can now efficiently pinpoint where they're coming from. Offense is the best defense with SXFI GAMER—skillfully take down enemies before they even realize you're there.

### **CommanderMic with inPerson® Mic Technology**

It's our best one yet. SXFI GAMER is paired with our CommanderMic, a streaming microphone that is designed to deliver the same sensitivity and clarity as many professional microphones with its unique acoustic design and integrated pop filter.

CommanderMic is further enhanced with our latest SXFI inPerson® Microphone technology that uses an algorithm to effectively detect human voice and focus on enhancing audible speech while cancelling out ambient noises. Speak with utter confidence and be heard clearly as you communicate your game plan with your teammates as if you're next to them in person.





## SXFI GAMER: KEY FEATURES

### Custom-designed Kevlar USB-C Cable

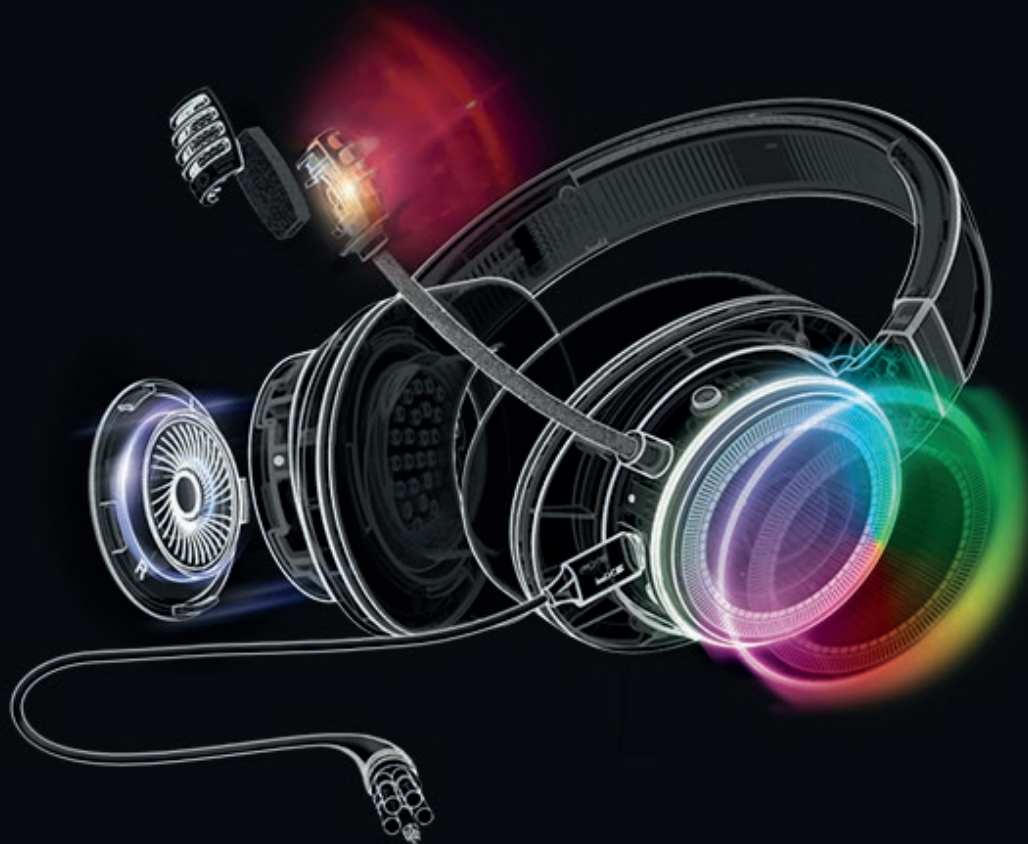
Strong. Durable. Light. Flexible. Further enhance your gaming experience with SXFI GAMER's custom-designed, high-speed Kevlar USB-C cable.

SXFI GAMER is fitted with a Kevlar-reinforced cable that has been meticulously crafted and engineered for exceptional tensile strength, which is wrapped in an aluminum and copper shield that makes it highly durable. The cable is then finished with a nylon braid to achieve maximum flexibility, and is capable of high-speed data transfer to drive the maximum potential of the gaming headset.



### RGB Light Rings with 16.7 Million Colors

Light the way with SXFI GAMER's fully-customizable RGB Light Rings, which has 16.7 million colors to select from. SXFI GAMER allows you to change the ear cups' light rings to basically any color you like. Simply connect your SXFI GAMER to the SXFI Control software on PC / Mac to customize the headset to your heart's desire. If you can't decide on a color, why not have it all? Switch to the Rainbow Pulse mode to wear them all at once!

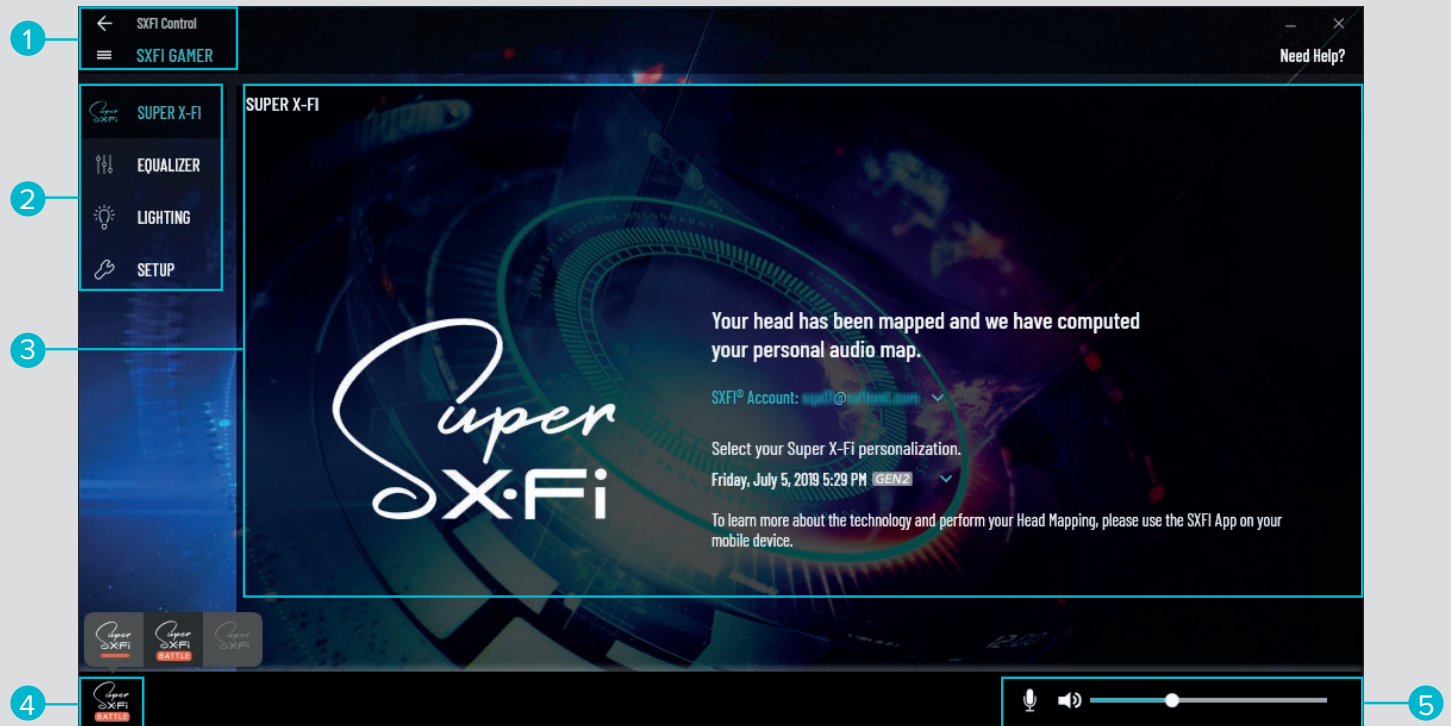


# AUDIO ENHANCEMENT AND CUSTOMIZATION

## SXFI Control

Available for PC and Mac, SXFI Control software provides users with various configuration options to enhance the performance of their SXFI products and to personalize audio settings.

Visit [creative.com/SXFI/support](https://creative.com/SXFI/support) to download.



### 1. Device Tab

Connected device(s) will be listed on this tab

### 2. Side Navigation Menu

Side navigation displays the features and settings available on SXFI Control

### 3. Dashboard

SXFI Control's dashboard provides a quick overview of the application. Users may also click on the available Sign In button to configure any SXFI devices with their Super X-Fi profile

### 4. Super X-Fi Mode Selection

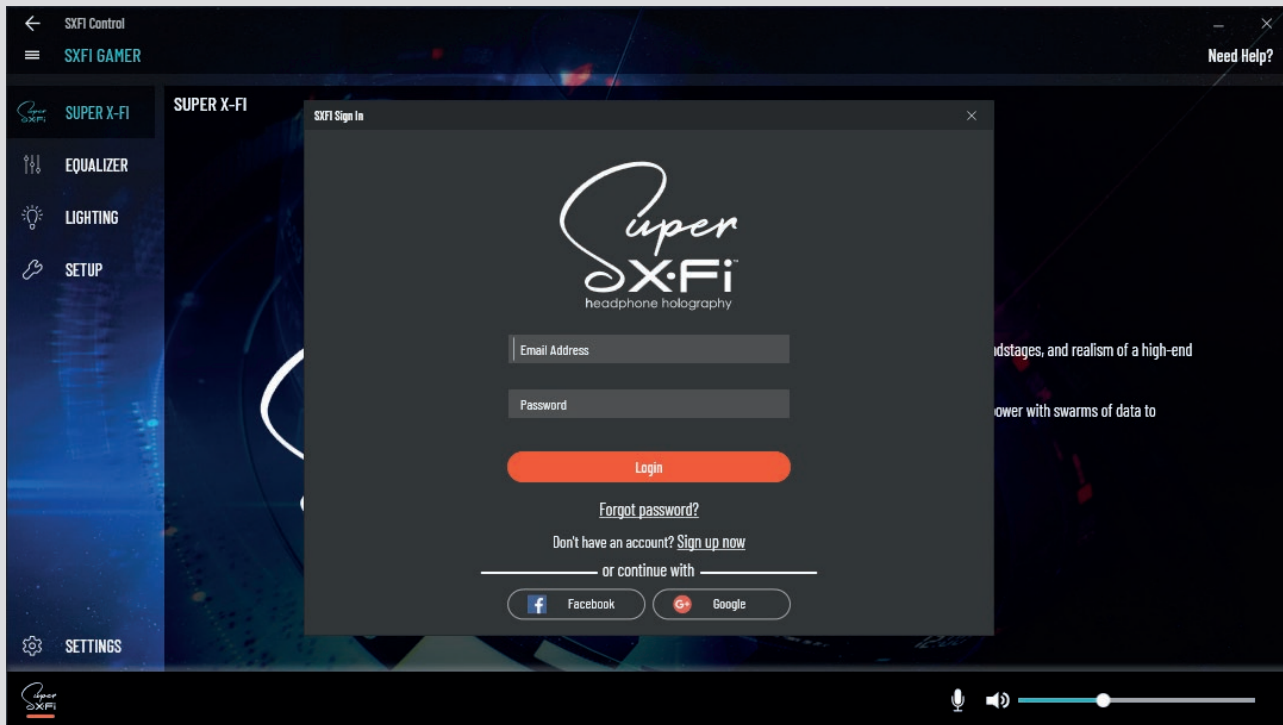
Turns on / off Super X-Fi BATTLE Mode. Users may also hover over the Super X-Fi button to access pop-up preview

### 5. Volume Slider

The slider offers users the ability to adjust the microphone's recording volume as well as audio playback volume on their device



## SUPER X-FI SIGN IN



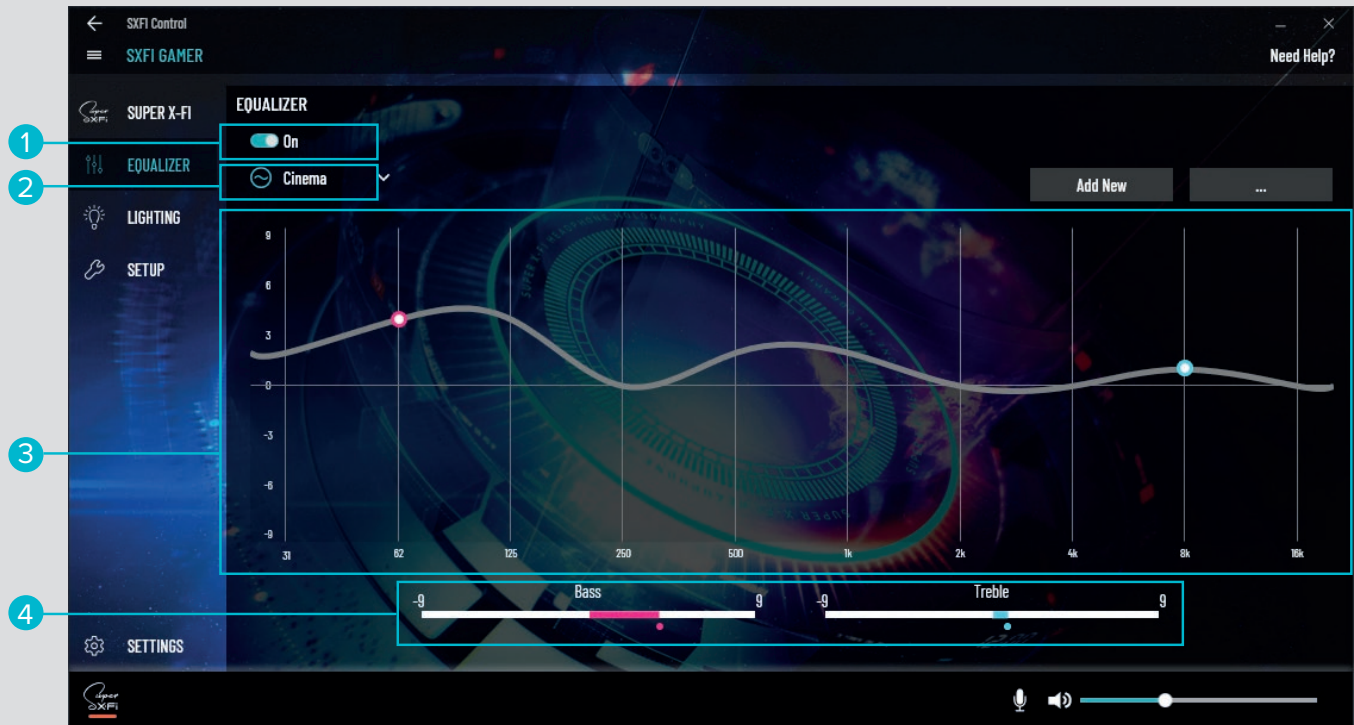
A prompt box will pop up when the Sign In button is clicked. Users who have not registered for an account may do so by clicking on the [Sign Up Now](#) link.

*Note: Users are required to complete the Head and Ear Mapping process on the SXFI App to enjoy the full experience of Super X-Fi.*



Upon successful login, the Super X-Fi profile attached to the registered account will automatically load onto the connected device. If there are more than one Super X-Fi profiles attached to the account, users may click on the drop-down list to select their preferred profile.

# EQUALIZER



## 1. Toggle Button

Turns on / off Equalizer

## 2. Equalizer Preset Selection

Click on the drop-down list to switch between available equalizer presets. To create a new Equalizer preset, click on the Add New button. To revert/rename/delete profiles made, click on the ... button

## 3. Graphic EQ

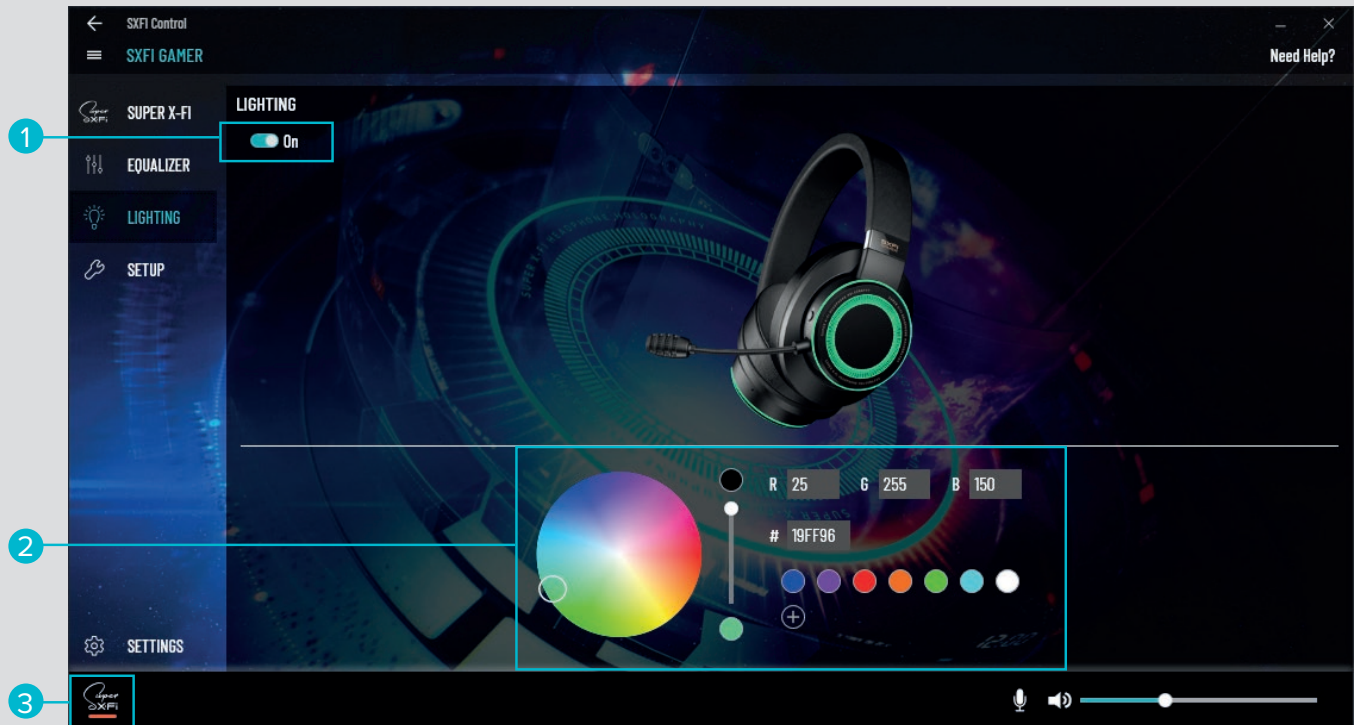
When hovering over the EQ's canvas, the cursor will switch to a pen. Click and draw across the EQ canvas to create a new EQ effect. To fine tune the effect, simply drag the cursor up / down on each band

## 4. Bass & Treble Slider

Changes made to the Bass or Treble values will be reflected on their respective sliders in real-time



# LIGHTING



## 1. Toggle Button

Turns on / off RGB Lighting

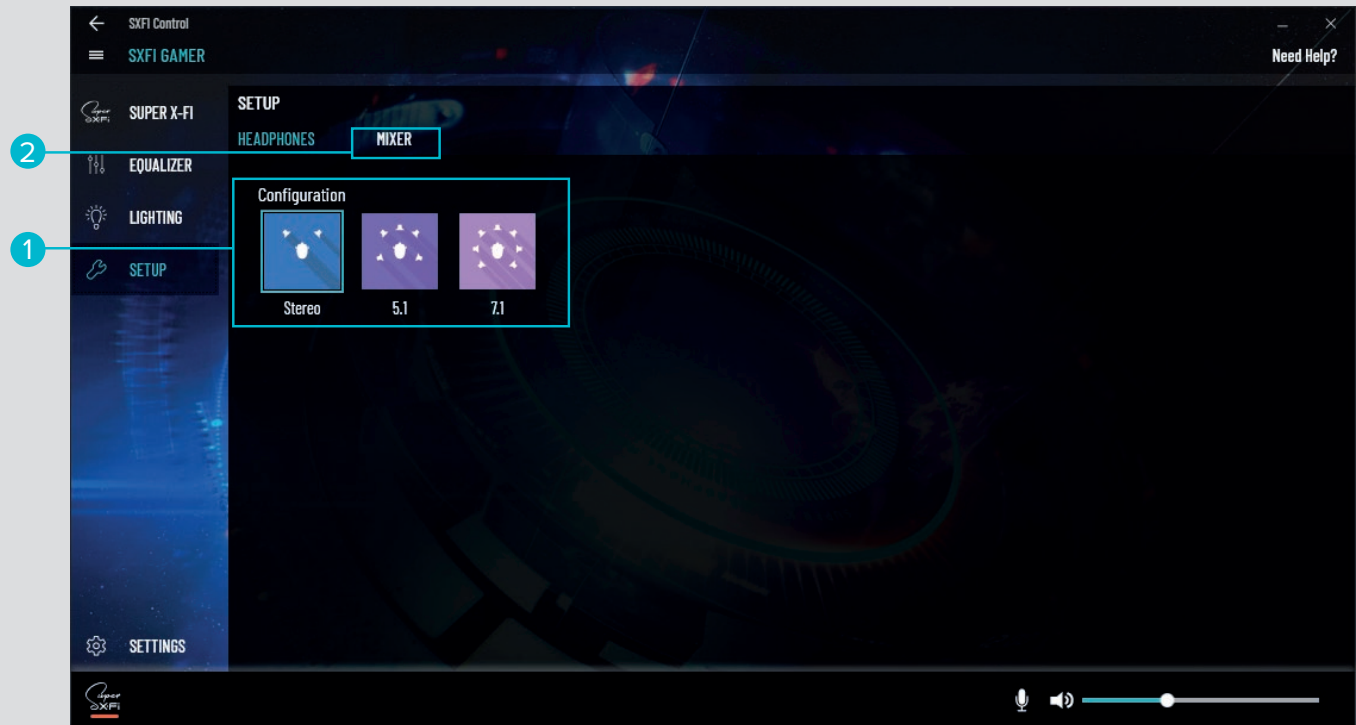
## 2. RGB Color Wheel

The color wheel provides users the option to select their preferred choice of color from the 16.7 million colors on the RGB spectrum to display on the headphones / headset. Users may also select from the color presets available or enter RGB color codes in the respective boxes

## 3. Default Light Rings Selection

If users would like to reset the Light Rings back to its default colour, click on 'Settings > General > Select Theme'

# SETUP



## 1. Headphones

Headphones Configuration allows users to set up their computer system audio output from Stereo up to 7.1 Channels.

## 2. Mixer

The Mixer tab equips users with more advanced controls for their headphones; access the tab to adjust the device's audio playback volume as well as microphone's recording volume.



## TECHNICAL SPECIFICATION



MODEL	CREATIVE SXFI GAMER
Audio Processor	Super X-Fi Technology
Drivers	50 mm Neodymium Magnet
Headphone's Frequency Response	20–20,000 Hz
Headset's Impedance	32Ω
Headphone Sensitivity @ 1 kHz	114 dB / mW
Audio Format	2.0 / 5.1 / 7.1 Channels, 24-bit / 96 kHz
Microphone's Type	Uni-directional
Microphone's Frequency Response	100–16,000 Hz
Microphone's Impedance	< 2.2 kΩ
Microphone's Sensitivity	1 kHz: -42 dB
Weight	349g with mic 336g with mic
Connectivity	USB, 3.5 mm Stereo Input
Colors	Black
Works With	Windows®, MacOS, PS4, Xbox One, Nintendo Switch
Supported Operating Systems	MacOS 10.13 and above, Windows® 10 and above, PS4 Firmware Version 5.0 and above, Nintendo Switch Switch OS 5.0 and above, Xbox One Xbox OS Version 10.0 and above
Ear Pads	Quick-release protein premium leatherette ear pads for prolonged comfort
RGB Light Rings Rings	16.7 million colors